



**Practical,  
comfortable,  
silent and safe**

TEKA's new organic waste disposers help to keep the kitchen free of bacteria, odors, and rubbish in a comfortable and hygienic way.

It converts the waste into very fine particles that are removed through the pipes, reducing the volume of rubbish in the kitchen and the amount of plastic bags that are used.



## The Eraser RANGE

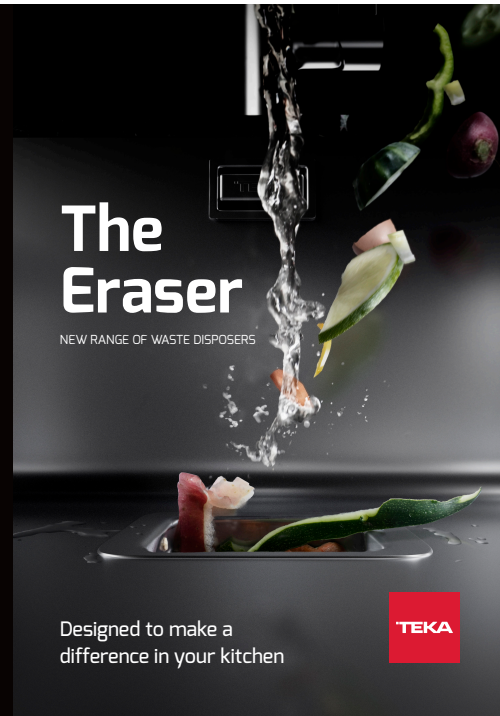
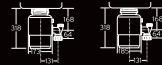


TR 550 TR 750

	TR 550	TR 750
Colour Finish	Black	Black
Type of feed	Continuous feed	Continuous feed
Motor type	Single phase	Single phase
Motor Power, HP	0.55	0.75
Motor Power, W	380	405
Motor protection	Manual reset overload	Manual reset overload
Volts	220-240	220-240
Hz	50-60	50-60
RPM	1725	1725
AMP, A	7.1	8.1
Grid phases	1	1
Grid chamber capacity, ml	980	980
Sink Flange, mm	50	50
Overall Dimensions		
Length (mm)	318	318
Width (mm)	173	185
Built-in Air Switch	-	-
Quick lock mounting	-	-
Plastic stopper	-	-
Dishwasher Drain Connection	-	-
Unblocking wrenchette	-	-

MAIN FEATURES

ACCESSORIES



## The Eraser

NEW RANGE OF WASTE DISPOSERS

Designed to make a  
difference in your kitchen



You are one touch away from having **total hygiene** in your kitchen.

Do you have organic waste in the sink? Do you know where to throw the scraps? Get rid of all of them in just three easy steps.

**1**  
Open the tap

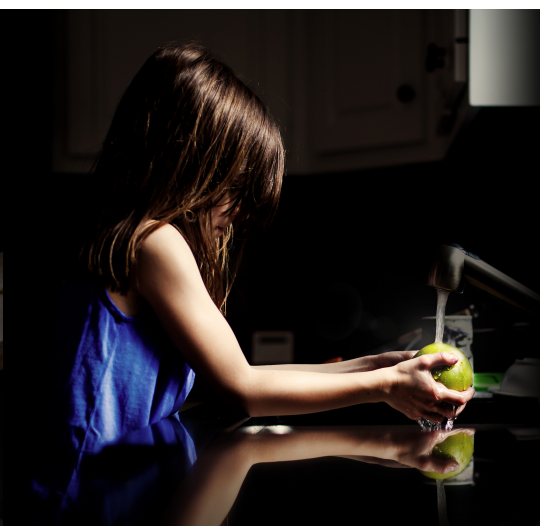
**2**  
Press the button

**3**  
Waste is removed in a matter of seconds



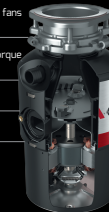
Forget the awkward task of removing waste from the sink by hand.

Teka's waste disposals do not have blades. Thanks to its innovative grinding wheel system, the safety of you and your family is guaranteed without losing efficiency.



## Only **benefits**

- ▶ **Greater hygiene** in your kitchen.
- ▶ **Sustainability:** reduces the accumulated rubbish as well as the use of bags.
- ▶ **Safety:** Teka's waste disposals do not use blades or fans for operation.
- ▶ The disposers are very **quiet**, thanks to their high-torque induction motor and their new grinding technology.
- ▶ They do not need maintenance.
- ▶ Their consumption of water and energy is **minimal**.



## Did you know ...?



Teka's waste disposers are designed for any type of sink; they only need a 3/2 valve in addition to a grounding point for installation and optimal operation.



A mounting adaptor for sinks with square valves is available as optional accessory.



A 50mm drain is the best size to install the disposer.



They can practically eliminate any type of organic residue, even chicken bones. Avoid shell debris from some mollusks and foods with fibre or that are especially greasy, such as banana or onion skins.